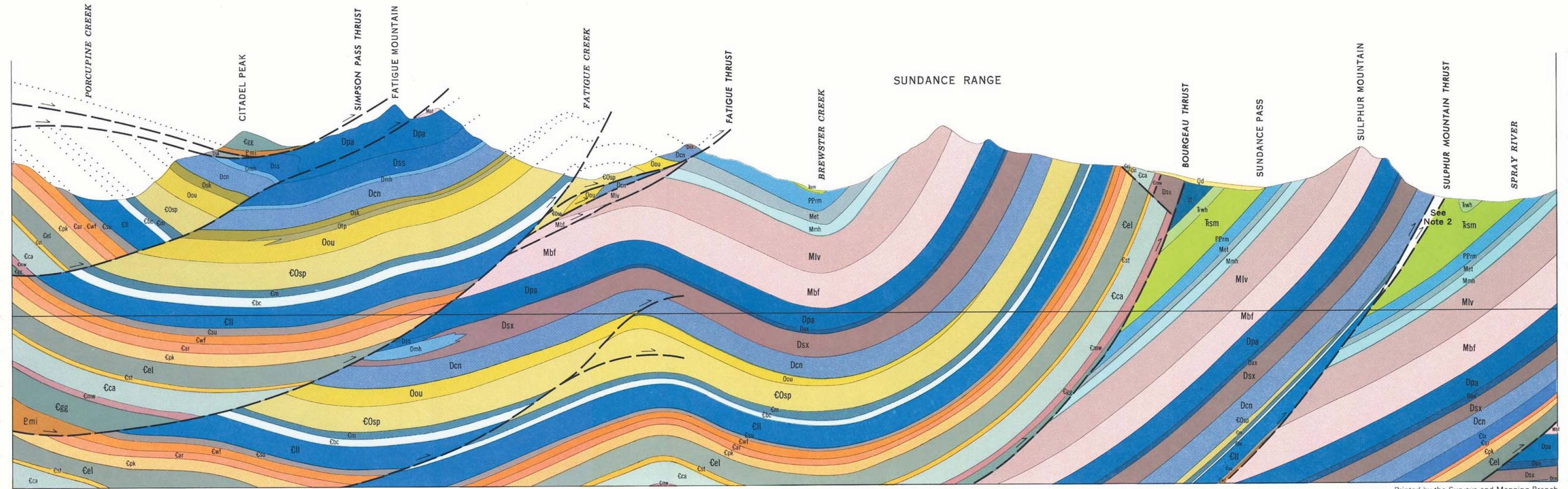


FEET
12,000
10,000
8,000
6,000
4,000
2,000
SEA - LEVEL
-2,000
-4,000
-6,000
-8,000

METRES
3500
3000
2500
2000
1500
1000
500
SEA - LEVEL
-500
-1000
-1500
-2000



Printed by the Surveys and Mapping Branch

Published, 1972
115°45'
MAP 1295A | MAP 1294A

Section 2